

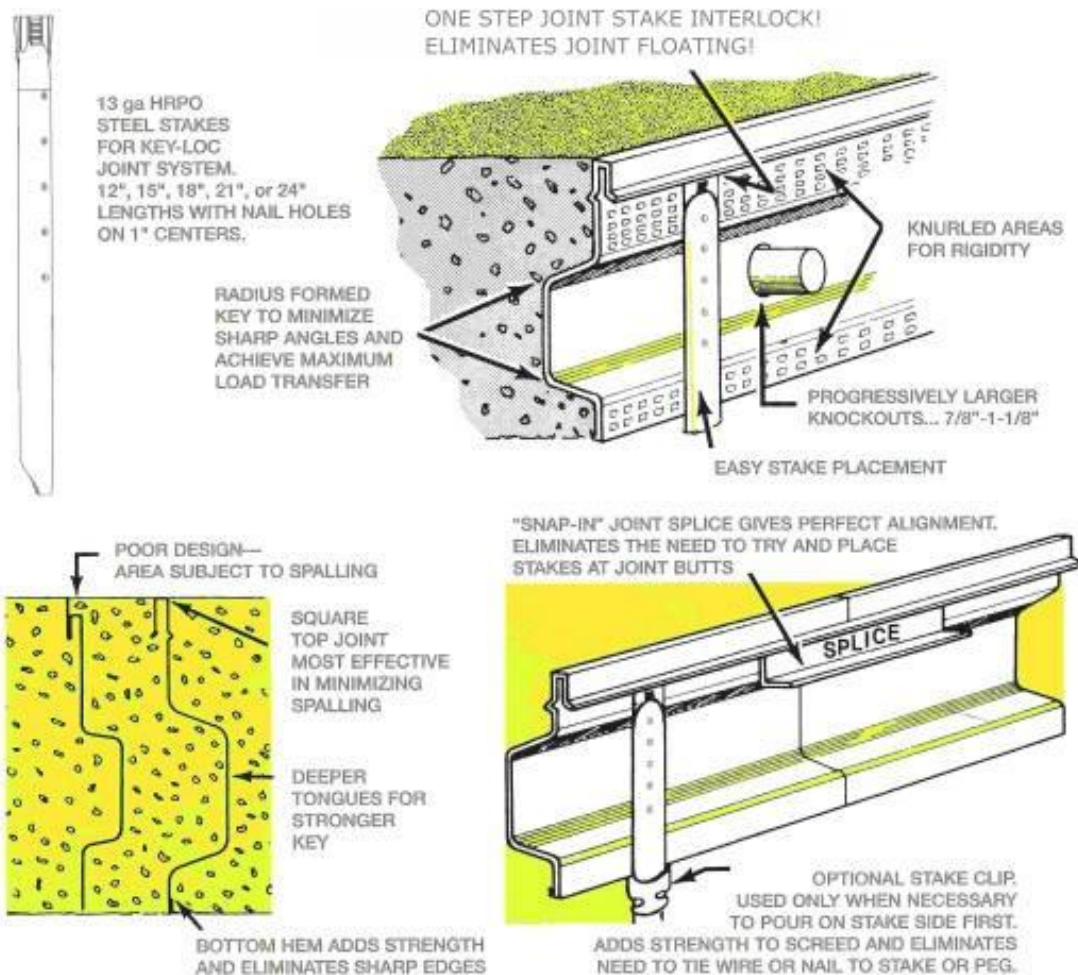
Key-Loc Joint System

Construction Joints - Control Joints

When indicated on drawings or called for in specifications the contractor shall furnish and install **Key-Loc® Joint System**, a *one step* interlocking joint-stake keyway system with ratchet top stakes, joint splices and optional stake clips.

Advantages

- ◆ Joint and stake interlock, eliminates joint floating or rising from the stake.
- ◆ Eliminates time consuming process of wiring, screwing, or nailing joint to a stake or peg.
- ◆ Square top designed to minimize spalling and provide for expansion to control cracking.
- ◆ Eliminates checker boarding, edge curling, and saw cutting.
- ◆ Saves on installation time - stakes interlock with joint at any point . . . joint splice eliminates need to place stake at joint butts.
- ◆ Each keyway individually designed for maximum load transfer with keyway centered in slab.

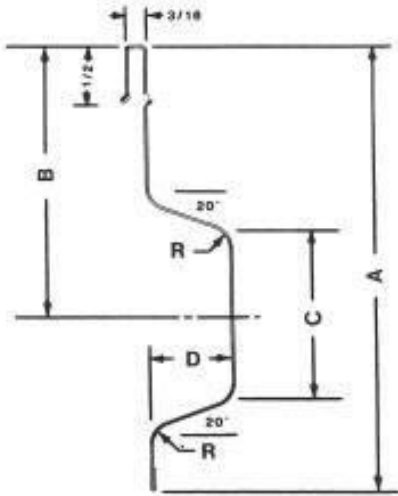


Form-A-Key Products

a division of **Cardinal Manufacturing Company, Inc.**
225 Eiler Avenue, P.O. Box 14127
(502)361-1396, 1-800-662-5576, Fax: (502)363-5905

Key-Loc Joint System

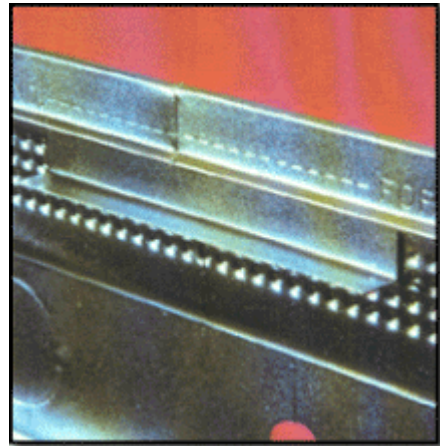
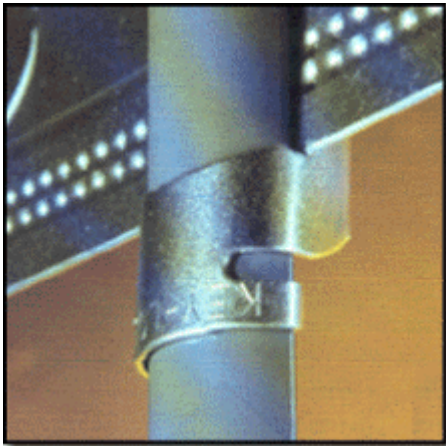
PRODUCT SPECIFICATIONS



| SLAB THICKNESS | A | B | C | D | R | KNOCK-OUT DIAMETER |
|----------------|--------|--------|----------|---------|--------|--------------------|
| 3" | 2 1/4" | 1 1/2" | 3/4" | 3/8" | 1/8" | N/A |
| 4" | 3 1/8" | 2" | 1 3/32" | 11/16" | 3/16" | 7/8" |
| 5" | 4 1/8" | 2 1/2" | 1 9/16" | 3/4" | 13/64" | 7/8" |
| 6" | 5 1/8" | 3" | 1 15/16" | 7/8" | 7/32" | 1 1/8" |
| 8" | 7 1/8" | 4" | 2 3/8" | 1 1/16" | 1/4" | 1 1/8" |
| 10" - 12" | 9 1/8" | 5" | 3 1/4" | 1 1/8" | 9/32" | 1 1/8" |

KNOCK-OUTS ON 6" CENTERS • RATCHET TOP STAKES 12", 15", 18", 21", 24"

ASTM NUMBERS - KEY-LOC® Joint meets Corp of Engineers Specification "03300-Concrete for Building Construction" and has ASTM numbers of A653 for the joint and A569 for the stakes.



Form-A-Key Products

a division of **Cardinal Manufacturing Company, Inc.**
 225 Eiler Avenue, P.O. Box 14127
 (502)361-1396, 1-800-662-5576, Fax: (502)363-5905